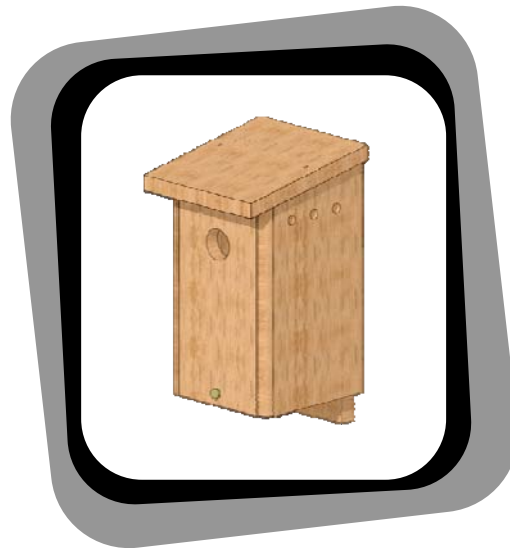


NC400 TV Birdhouse

Quick Start Guide



THE NEST CHANNEL™
by Suncast Ventures, LLC.
1144 Suncast Lane #9
El Dorado Hills, CA 95762

Phone (916) 673-3456
Fax (866) 836-4209

www.nestchannel.com



NATURE'S OWN REALITY SHOW™

www.nestchannel.com

We build the world's best TV birdhouses.

Model: NC400

Welcome!

The birdhouse is shipped with everything you need to install it in your yard. The parts are shipped inside the birdhouse – just unscrew the thumbscrew on the front panel to find them.

The following are included; please unpack and identify the parts:



Birdhouse



Birdhouse power supply



Nest Channel™ receiver



Receiver power supply



Video cable

Quick Start Guide

First, connect everything and make sure it works properly indoors, before installing your birdhouse in your yard.

Follow these steps to get running:

- 1 Connect the video cable between the Nest Channel™ receiver and your TV.
- 2 Plug-in the Nest Channel™ receiver.
- 3 Plug-in the birdhouse.
- 4 Check the TV reception.

The back of this sheet describes each of these steps in more detail.

Once you have the birdhouse working, please read the instruction booklet that comes with the birdhouse.

Thank you for purchasing this Nest Channel™ product. We wish you great success with your future bird tenants!

1



Connect the video cable

Plug one end of the video cable into the Nest Channel™ receiver (marked VIDEO TO TV), plug the other end into your TV or VCR video input jack.

Most TVs and VCRs have video input jacks that will work with the Nest Channel™ receiver. Look for these jacks on the front or back of your TV. It is probably simpler to use the jacks on your TV instead of your VCR, unless you plan to make recordings from the birdhouse. The video jack is usually colored yellow and some TVs have more than one.

Make sure to connect the cable to a video INPUT jack – not an output jack.

In order to see the picture from the birdhouse camera, you must change your television source to select the video input. Typically, this is done by pressing a button on the front of the TV or VCR, or by using the remote control.

2



Plug-in the Nest Channel™ receiver

The birdhouse comes with a small 9V power supply for the Nest Channel™ receiver. The cord plugs into a jack on the receiver marked POWER 9VDC. This power supply should only be used indoors.

DO NOT USE THIS POWER SUPPLY OUTDOORS.

Locate the Nest Channel™ receiver indoors next to your TV and attach the antenna to the receiver. Rotate the antenna so it points straight up. Locate the receiver away from other electronic devices and large metal objects.

It's OK to leave the receiver running all the time. The receiver uses very little electricity, so it only costs a penny or so a month to operate. Having the receiver always on makes it easy to switch to your "Nest Channel" and monitor your nest anytime!

3



Plug-in the birdhouse

The birdhouse comes with a special UL approved outdoor waterproof power supply.

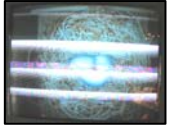
You should only use the Nest Channel™ outdoor power supply with the birdhouse. Do not use any other power supply.

The small wire from the power supply connects to the wire coming from the birdhouse. Plug the power supply into an outdoor outlet that provides a weatherproof cover. These outlets should be GFI (Ground Fault Interruption) protected.

If no exterior outlet is available, you may use a three prong, outdoor type extension cord. Make sure to place the extension cord so its plug cannot fall or lay in standing water.

You may wish to mount the power supply to a post, wall or other structure using the supplied screws. The birdhouse uses very little electricity, so you can leave it running all the time.

4



Getting the best reception

The birdhouse uses a 2.4GHz frequency. Using other 2.4GHz wireless products, such as cordless telephones or wireless Internet, may cause interference in the birdhouse picture. This interference usually looks like bright white bands that flicker across the screen.

If you notice poor quality or interference in the picture, check if there are any other products in your home that use a 2.4GHz frequency. You will need to turn these products off when monitoring the birdhouse to prevent them from interfering with the birdhouse signal.

We recommend that you first test your birdhouse with it sitting right beside your TV set. This allows you to check its operation before moving the birdhouse into your yard.

Once you have confirmed the birdhouse is working indoors, use a long extension cord and slowly move the birdhouse away from the TV receiver while another person watches the TV picture. Sometimes, small adjustments in the location of the birdhouse or the TV receiver's location can improve the picture.